

CONTAINER SIZE & MATERIAL

MAIN CANOPY & SIZE: RESERVE CANOPY & SIZE:

CONTAINER SIZE: I1 I2 I3 I4 I5 I6 I7 I8 I9
 I1L I2L I3L I4L

CONTAINER MATERIAL: CORDURA 1000D & AEROKNIT BALLISTIC CORDURA

HARNESS TYPE

HIPRING ONLY* *default on all ICONS TYPE 8 (WIDE) CHESTSTRAP
 CHESTRING + HIPRING (fully articulated) TYPE 17 (NARROW) CHESTSTRAP

HARNESS SIZE

MEASURING UNITS: metric (kg/cm) imperial (in/lbs) GENDER
 WEIGHT: HEIGHT: TORSO: TORSO 2: LEG PAD:
 CHEST: WAIST: HIP: LATERAL: INSEAM:

MLW C L LS XY SY LY SH RSL P Office use only

CONTAINER OPTIONS

MAIN DEPLOYMENT OPTIONS:

PILOT CHUTE MATERIAL: ZP F-111
 PILOT CHUTE COLOR: BLACK WHITE
 PILOT CHUTE HANDLE¹: FREEFLY COLOR
 HACKEY SACK COLOR 1
 COLOR 2

SEMI-STOWLESS D-BAG
 WINGSUIT MODIFICATION²

RISERS

RISER LENGTH: 18" 20" 22" 24"
 RISER RING TYPE *: MINIFORCE STANDARD
 *default on all ICONS
 RISER COVERS: MAGNETIC TUCK TABS

EMERGENCY RELATED:

RESERVE HANDLE: METAL-D SOFT COLOR
 CUTAWAY HANDLE COLOR:
 RSL SKYHOOK NONE (STRAIGHT PIN)
 FRENCH MODIFICATION³

SPECIALS:

BACKPAD MATERIAL⁴: AEROFIT* SPACER FOAM
 UNIVERSAL MOUNT⁵: YES* NO
 BELLY BAND REMOVABLE: YES* NO

1. Freely is one color (Default on V) and Hackey is up to 2 colors - chosen from list of actual colors available.
2. Wingsuit modification - includes dynamic corners and 9' bridle (12' bridle available on request).
3. French modification - Moves AAD cutter location, per Fédération Française de Parachutisme regulations.
4. Backpad material - Spacer foam is standard on A Aerofit backpad available.
5. Universal mount - GoPro ready, No custom embroidery available on right ring cover. Universal mount should be checked no for custom embroidery option.



OPTIONAL LETTERING EMBROIDERY

POSITION	LETTERING	FONT	COLOR
CUTAWAY HANDLE:	<input type="text"/>	<input type="checkbox"/> SCRIPT /PRINT <input type="checkbox"/>	COLOR <input type="text"/>
SOFT RESERVE HANDLE:	<input type="text"/>	<input type="checkbox"/> SCRIPT /PRINT <input type="checkbox"/>	COLOR <input type="text"/>
RIGHT RING COVER*:	<input type="text"/>	<input type="checkbox"/> SCRIPT /PRINT <input type="checkbox"/>	COLOR <input type="text"/>
LEFT/RIGHT SIDEWALL**:	<input type="text"/>	<input type="checkbox"/> SCRIPT /PRINT <input type="checkbox"/>	COLOR <input type="text"/>
LEFT/RIGHT RISER COVERS**:	<input type="text"/>	<input type="checkbox"/> SCRIPT /PRINT <input type="checkbox"/>	COLOR <input type="text"/>

* Universal mount should be checked NO for custom embroidery option.

**For custom artwork on sidewalls, riser covers and ring cover contact our office. Additional fees to digitize artwork and for sew out proof.

SERVICES & ADDITIONAL ITEMS

ASSEMBLE AND REPACK: YES NO

MATCHING GEAR BAG: YES* NO

*One base color for Cordura bag and one color for embroidery

AAD (extra charge)

*If you would like to order AAD with this ICON ORDER, please order it by specifying brand & type of AAD.

CUSTOMER & DEALER INFORMATION

REFERENCE #:

DEALER #:

CUSTOMER'S FULL NAME:

DEALER NAME:

CUSTOMER'S EMAIL ADDRESS:

DEALER'S EMAIL ADDRESS:

CUSTOMER'S PHONE #:

DELIVERY OPTION:

SPECIAL INSTRUCTIONS



Colors and material selection

COLOR		CORDURA	BALLISTIC	TRIM TAPE	HARNESS	EMBROIDERY	HACKEY SACK
BLACK		x	x	x	x	x	
COYOTE		x		x		x	
DARK GREY		x	x	x		x	
GOLD		x		x		x	
KELLY GREEN		x		x		x	
NAVY BLUE		x	x	x	x	x	
NEON GREEN		x		x		x	
NEON PINK		x				x	
NEON YELLOW		x			x	x	
OLIVE DRAB		x	x	x	x	x	
ORANGE		x		x		x	
PURPLE		x		x	x	x	
RED		x	x	x	x	x	
ROYAL BLUE		x	x	x	x	x	
SILVER		x		x	x	x	
WHITE		x		x	x	x	
YELLOW		x		x		x	
CAMO		x					
AEROKNIT GREY		x	x				
AEROKNIT BLUE		x	x				
AEROKNIT PURPLE		x	x				
AEROKNIT MILITARY GREEN		x	x				
AEROKNIT NEON GREEN		x	x				

Over the last couple years Aerodyne had been developing a new stylish proprietary material named AEROKNIT.

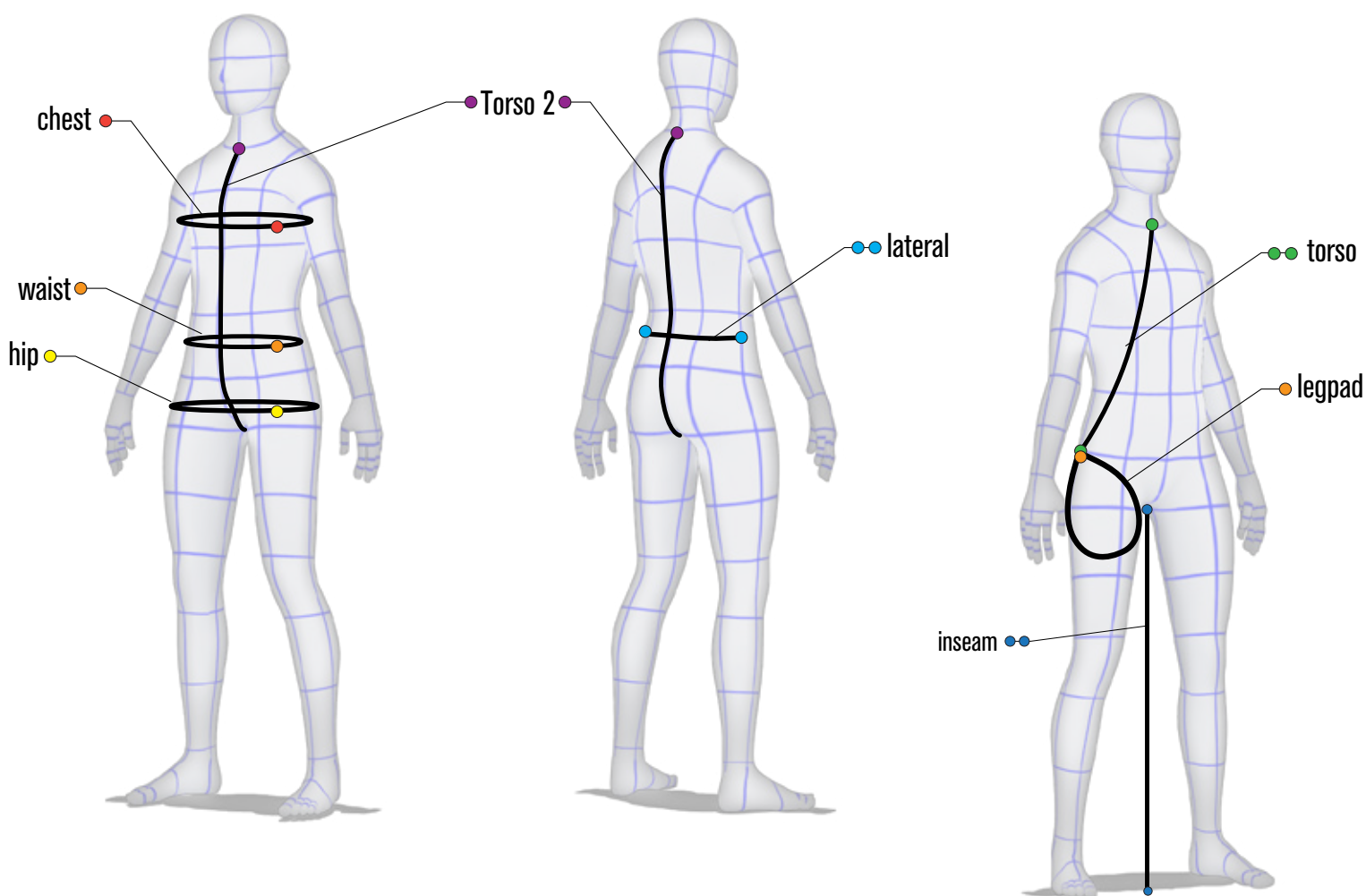
AEROKNIT shares the same rugged structural characteristics as CORDURA 1000 D.

ATTENTION: Colors are here only for reference.



MEASURING INSTRUCTIONS:

GENDER:	Male / Female
HEIGHT:	Without shoes on.
WEIGHT:	In shorts and t-shirt.
TORSO:	From the hole in the throat, down to the top of hipbone.
TORSO 2:	Measure the torso starting from the jugular notch, underneath the crotch and up the back to the bone at the base of the neck.
LEG PAD:	From the top hip bone to hip bone.
CHEST:	Do not over inflate your chest. Put your arms down. Measure across your nipples around the chest.
WAIST:	Measure around your waist over your navel. Don't suck your waist.
HIP:	Remove the wallet from your back pocket. Measure over the widest point.
LATERAL:	From side seam to side seam of your jeans.
INSEAM:	Stand up straight and barefoot. Place the end of the tape high up to the crotch and measure straight down to the floor. Make sure that the start of tape is high in the crotch. Do not curl the tape over the crotch.



Before measuring yourself, you should take into consideration, how **IMPORTANT** the correct measurements are. We strongly recommend that you follow these instructions:

Don't measure yourself alone.

Get someone to take your measurements.

The measuring tape should not be held too tight or too loose.

Double check each measurement.

Take measurements wearing a T-shirt and thin trousers.

Follow our reference sketches above to correctly measure each part of the body.

If you have any additional questions, please contact us by email: info@aerodyne.com.